

* Introduction

Features:

- * Model: RNK-05T, 2T, 3T, 5T, 10T, 20T
- * Load Capacities From 0.1Tons to 6Tons As Standard
- * High Accuracy Ball Screw
- * Upright and Inverted mounting
- * Top End: Top Plate, Clevis End, Threaded End, Plain End and Forked Head
- * Lifting, Lowering, Pushing, Pulling and Rolling Linear Motions
- * Single Unit, In Pairs or Multi-Units Arrangement Available
- * Electric Driven, Manual Operated or Both Are Available
- * Special Custom Design Available
- * Accessories: Protective Tube, Rubber Bellows, Electric Motor, Hand Wheel, Inverter, Limited Switches, Linking Shaft, Coupling, Pillow Block Bearing, Counter, Bevel Gearbox. Swivel Plate and Trunnion Base

Materials:

- * Lifting Screw: high accuracy ball screw
- * Worm Gear: bronze (optional: zinc alloy)
- * Worm Shaft: heated treated steel C45 (optional: stainless steel)
- * Bearing: taper roll bearing
- * Housing: casting iron (optional: aluminum for small model)
- * Oil Sealing (optional: high/low temperature oil sealing)





* Technical Datasheets

Model	Diam.	Pitch	Ratio	1800RPM			1500RPM			1200RPM			900RPM			600RPM			300RPM		
				input power (HP)	Work Load	Lifting Speed	input power (HP)	Work Load	Lifting Speed	input power (HP)	Work Load	Lifting Speed	input power (HP)	Work Load	Lifting Speed	input power (HP)	Work Load	Lifting Speed	input power (HP)	Work Load	Lifting Speed
RNK-05T	16mm P=5	1/5	0.2	33	1800	0.2	40	1500	0.2	53	1200	0.18	60	900	0.13	67	600	0.08	83	300	
		1/10	0.1	33	900	0.19	53	750	0.13	63	600	0.1	67	450	0.33	77	300	0.05	93	150	
		1/20	0.07	40	450	0.09	60	375	0.09	70	300	0.08	83	225	0.05	83	150	0.03	100	75	
RNK-2T	20mm P=5	1/5	0.93	166	1800	0.86	183	1500	0.87	233	1200	0.84	300	900	0.62	333	600	0.5	333	300	
		1/10	0.5	166	900	0.5	183	750	0.5	233	600	0.5	250	450	0.5	333	300	0.25	450	150	
		1/20	0.5	200	450	0.5	233	375	0.5	300	300	0.5	400	225	0.25	450	150	0.25	450	75	
RNK-3T	25mm P=5	1/6	1.31	233	1500	1.25	266	1250	1.18	316	1000	1.22	433	750	1.12	600	500	0.56	600	250	
		1/12	0.89	316	750	0.86	366	625	0.81	433	500	0.77	550	375	0.62	666	250	0.5	666	125	
		1/24	0.5	316	375	0.5	366	312.5	0.5	433	250	0.5	550	187.5	0.5	666	125	0.25	666	62.5	
RNK-5T	32mm P=5	1/6	1.86	300	1500	1.72	333	1250	1.66	400	1000	1.55	716	750	1.17	566	500	0.72	700	250	
		1/12	1.47	450	750	1.36	500	625	1.31	600	500	1.17	850	375	0.78	716	250	0.5	833	125	
		1/24	1.04	600	375	0.96	666	312.5	0.92	800	250	0.73	200	187.5	0.56	966	125	0.5	950	62.5	
	32mm P=10	1/6	1.86	120	3000	1.72	133	2500	1.66	160	2000	1.55	340	1500	1.17	226	1000	0.72	280	500	
		1/12	1.47	180	1500	1.36	200	1250	1.31	240	1000	1.17	286	750	0.78	286	500	0.5	338	250	
		1/24	1.04	240	750	0.96	266	625	0.92	320	500	0.73	850	375	0.56	386	250	0.5	380	125	
RNK-10T	40mm P=5	1/8	2.84	595	1125	2.64	664	937	2.48	779	750	2.3	962	562	2.22	1397	375	1.75	2200	187	
		1/16	1.5	595	562	1.4	664	468	1.31	779	375	1.27	1008	281	1.17	1397	187	0.92	2200	93	
		1/32	1.07	802	281	1	893	234	0.92	1031	187	0.86	1283	140	0.84	1879	93	0.65	2933	46	
	40mm P=10	1/8	2.84	324	1125	2.64	362	1875	2.48	424	1500	2.3	525	1125	2.22	762	750	1.75	1200	375	
		1/16	1.5	324	562	1.4	362	937	1.31	424	750	1.27	549	562	1.17	762	375	0.92	1200	187	
		1/32	1.07	437	281	1	487	468	0.92	562	375	0.86	699	281	0.84	1024	187	0.65	1600	93	
RNK-15T	40mm P=5	1/8	2.69	595	1125	2.5	644	937	2.35	779	750	2.17	962	562	2.11	1397	375	1.66	2200	187	
		1/16	1.42	595	562	1.32	644	468	1.24	779	375	1.2	1008	281	1.11	1397	187	0.87	2200	93	
		1/32	1.01	802	281	0.94	893	234	0.87	1031	187	0.81	1283	140	0.79	1879	93	0.61	2933	46	
	40mm P=10	1/8	2.69	324	2250	2.5	362	1875	2.35	424	1500	2.17	525	1125	2.11	762	750	1.66	1200	375	
		1/16	1.42	324	1125	1.32	362	937	1.24	424	750	1.2	549	562	1.11	762	375	0.87	1200	187	
		1/32	1.01	437	562	0.94	487	468	0.87	562	375	0.81	699	281	0.79	1024	187	0.61	1600	93	
RNK-20T	50mm P=10	1/10	3.57	466	1800	3.24	483	1500	3.01	650	1200	2.84	816	900	2.59	1116	600	1.89	1633	300	
		1/20	1.9	533	900	1.97	483	750	1.84	750	600	1.72	933	450	1.58	1283	300	1.15	1866	150	
		1/40	1.53	800	450	1.57	650	375	1.46	1116	300	1.44	1466	225	1.25	1916	150	0.92	2800	75	

* Selection Guide

1. Model Selection

Model: RNK-05T, 2T, 3T, 5T, 10T, 20T

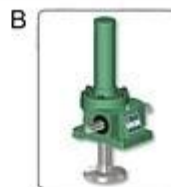
You must tell us below details:

- * single jack or multiple jacks system arrangement?
- * each jack max dynamic load _____ kgs?
- * each jack max static load _____ kgs?

2. Installation Selection



Upright

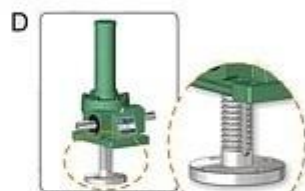


Inverted

Translating Screw: lift screw rotation and do linear motion



Upright



Inverted

Keyed Screw: lift screw anti-rotation and do linear motion



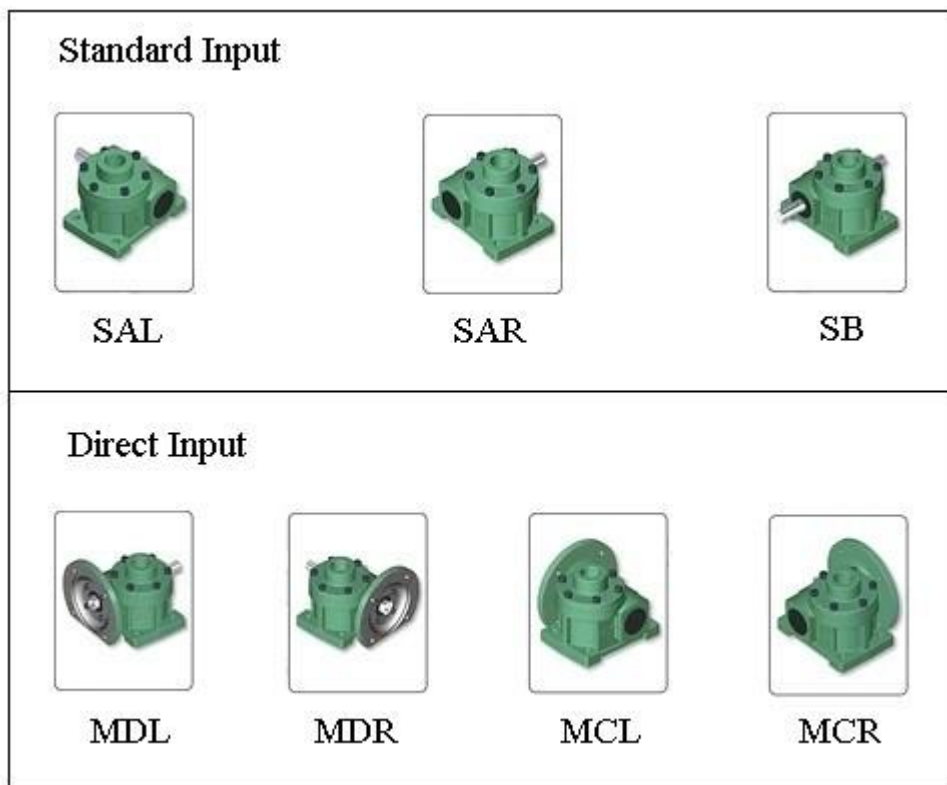
Upright



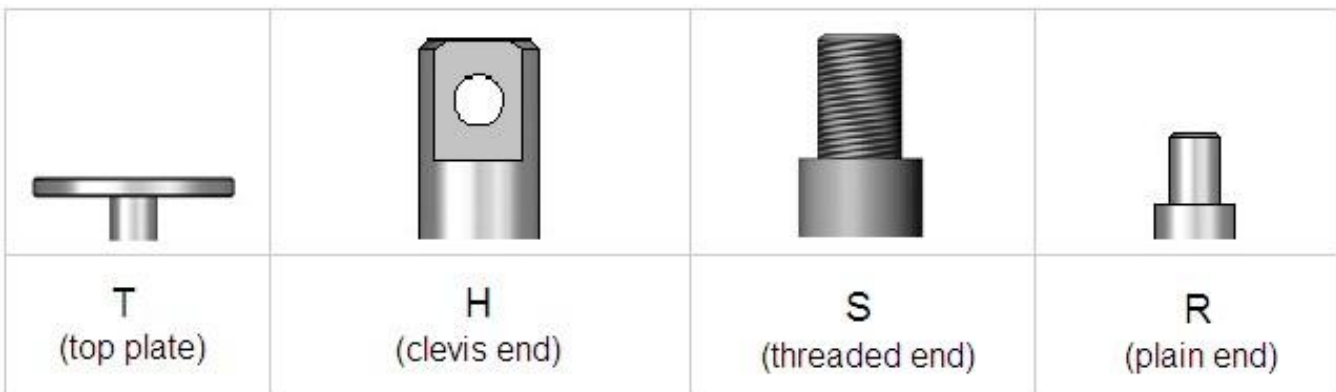
Inverted

Rotating Screw: lift screw fixed rotation, nut do linear motion

3. Input Forms Selection



4. Screw Top End Types Selection



5. Gear Ratio Selection

Manual Operated

N: Fast speed: 1 full turn 1 mm travel

M: Mid speed: 1 full turn 0.5 mm travel

L: Low speed: 1 full turn 0.25 mm travel

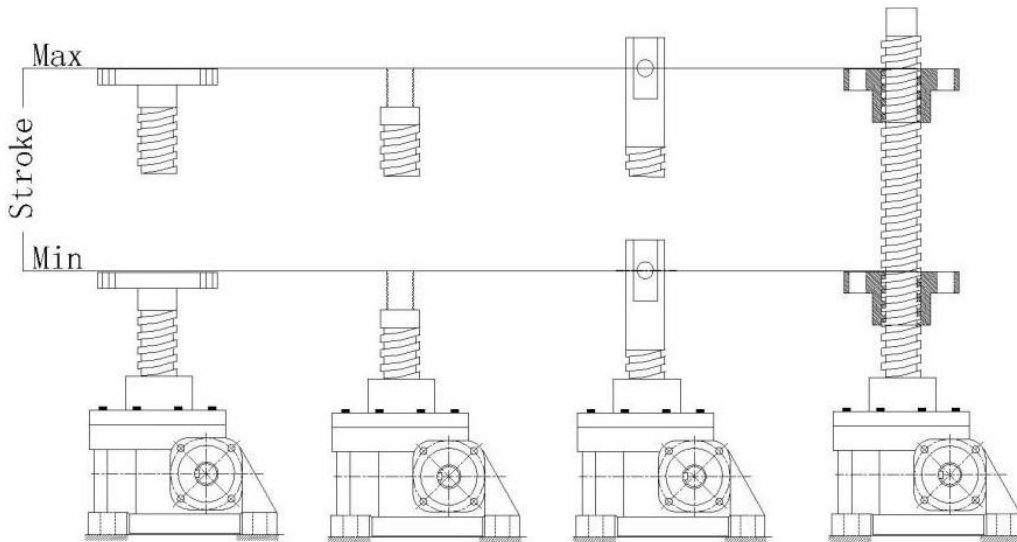
Electric Driven (input 1500 rpm)

N: Fast speed: 1500 mm/min

M: Mid speed: 750 mm/min

L: Low speed: 375 mm/min

6. Travel Stroke (mm)



7. Duty&Environment

Duty Cycles _____ times per day or _____ times per month

Ambient Temperature _____ °C

Conditions _____ (Clean / Dirty, Indoor / Outdoor)

8. Accessories

N=Standard jack, no additional options

P=Protective tube

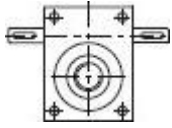
R=Rubber bellows

Y=Hand wheel

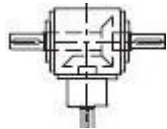
9. Design application sketch, very important

10. Special working conditions, please consult sales / engineers

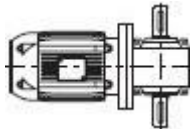
* Screw Jack System



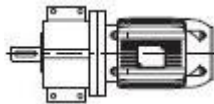
Screw Jack



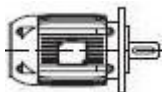
Bevel Gearbox



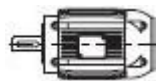
Motor+ Worm Reducer



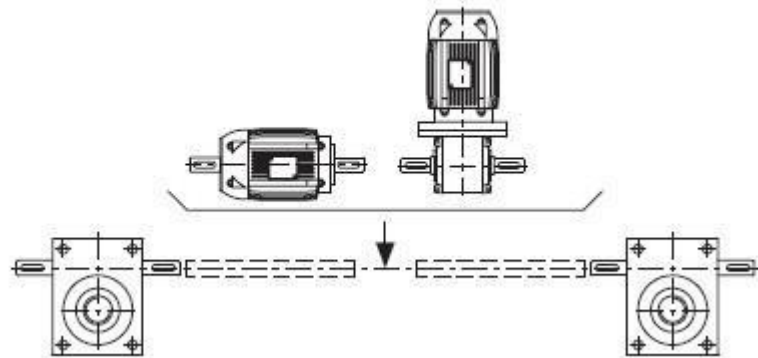
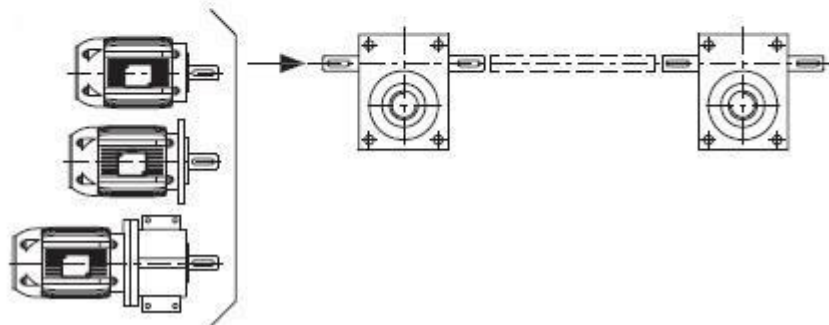
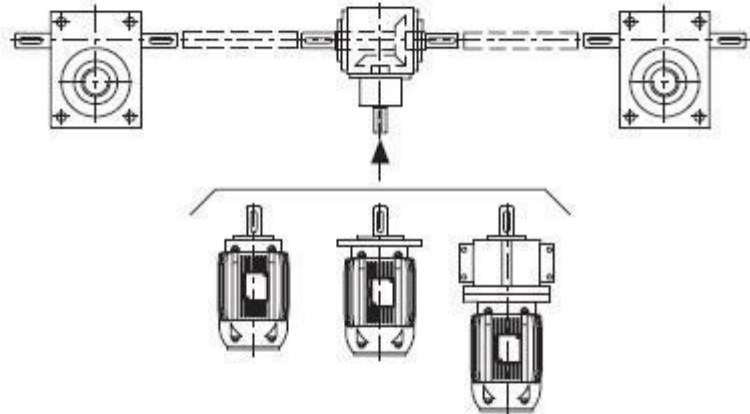
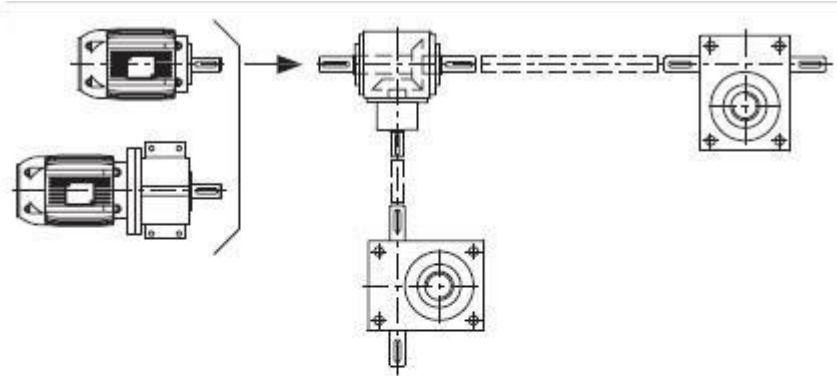
Gear Motor



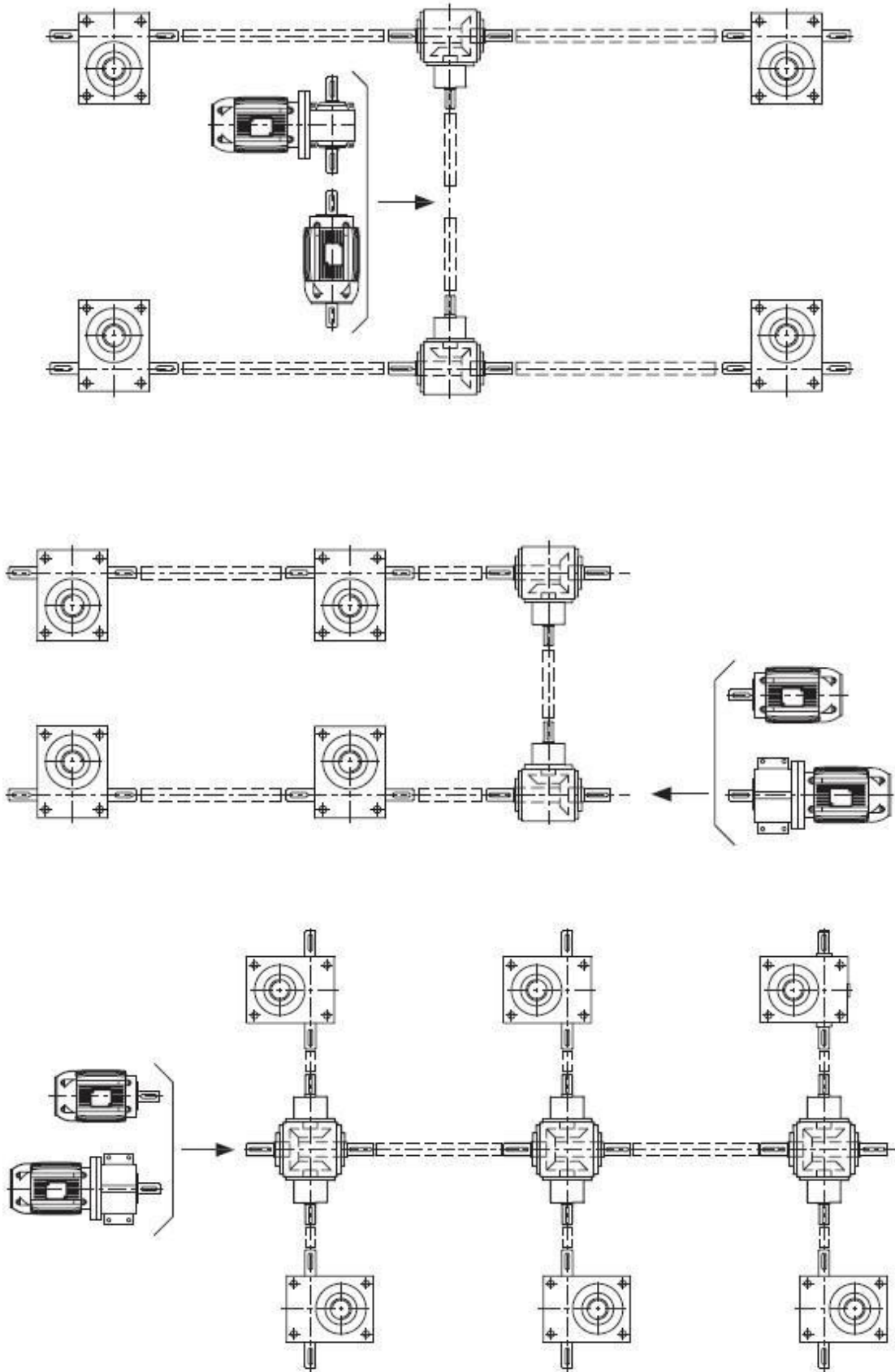
Vertical Motor



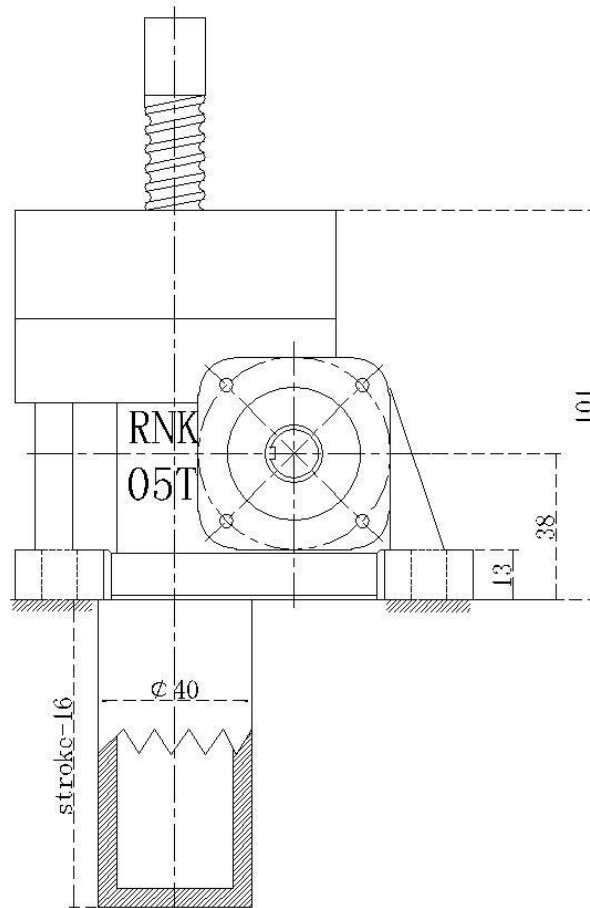
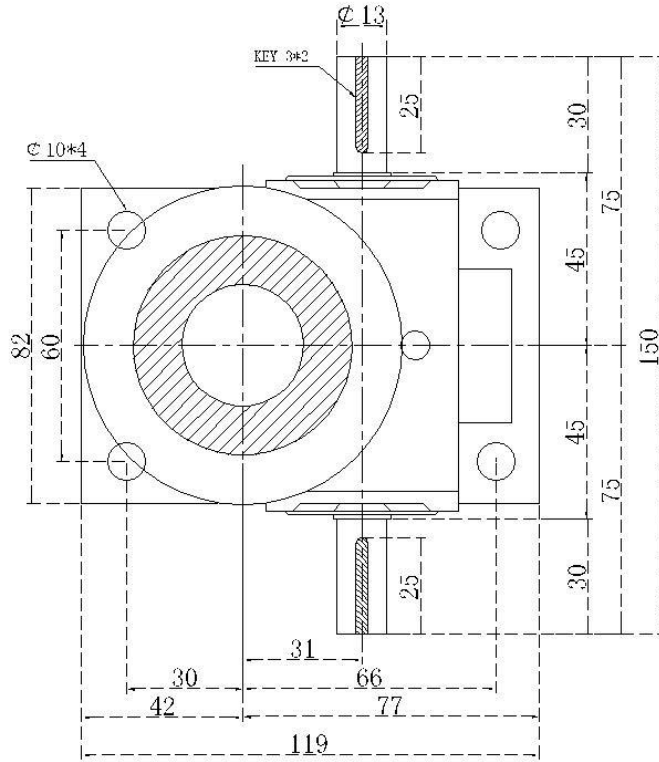
Foot Mount Motor



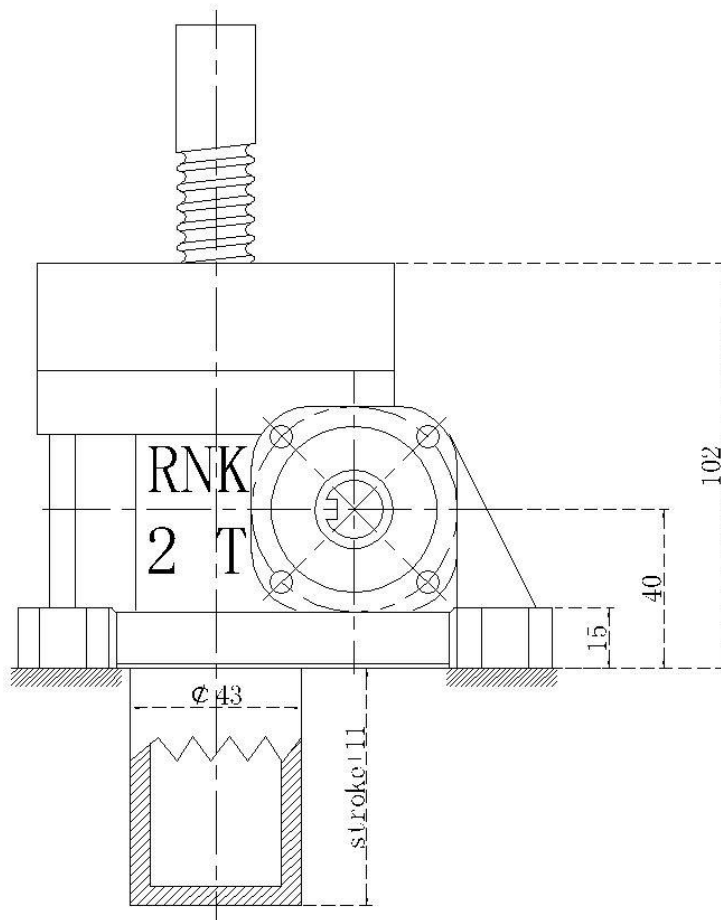
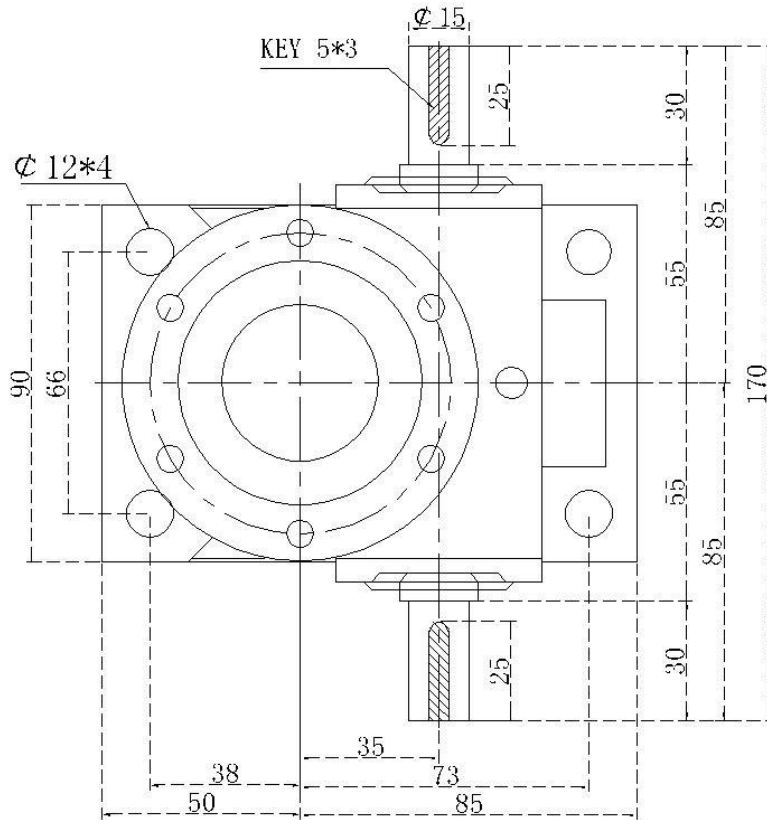
* Screw Jack System



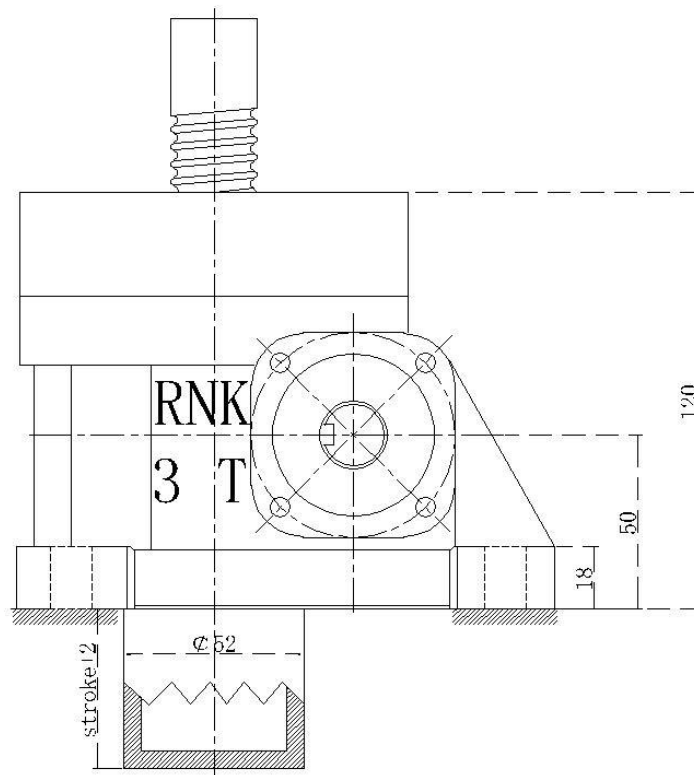
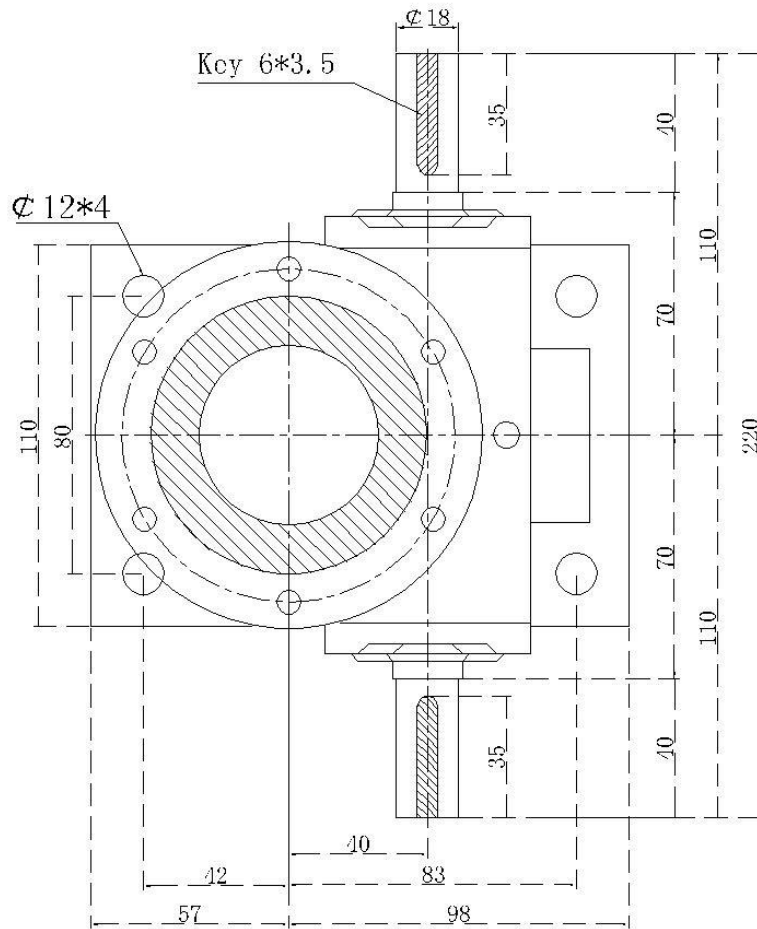
* RNK-05T



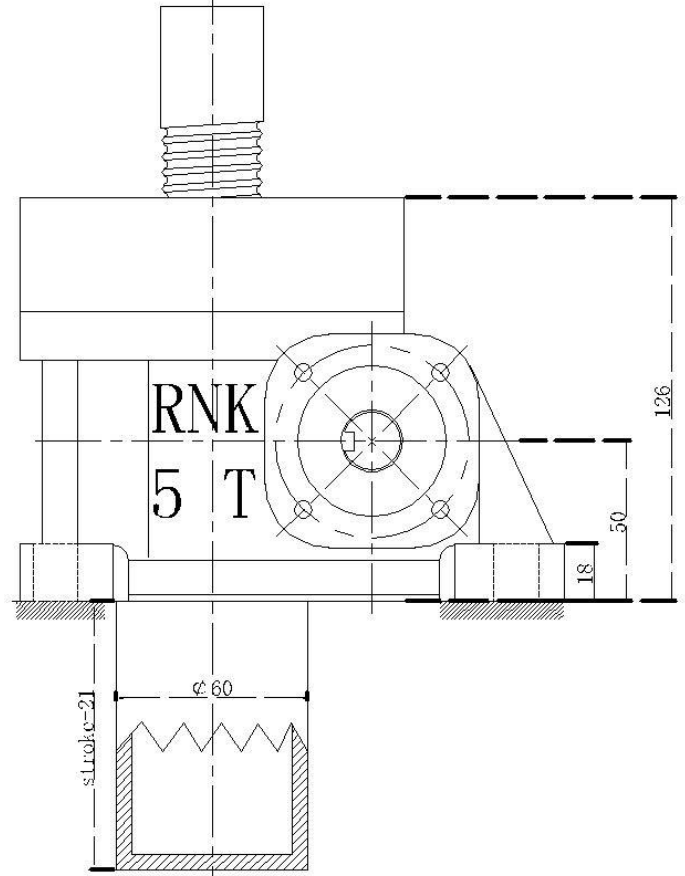
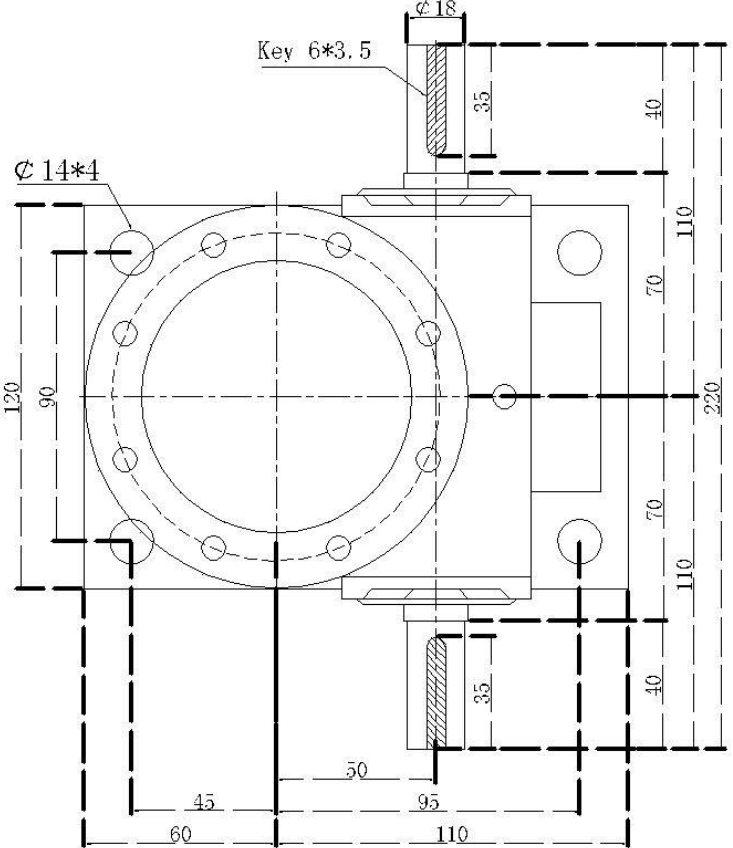
*** RNK-2 Tons**



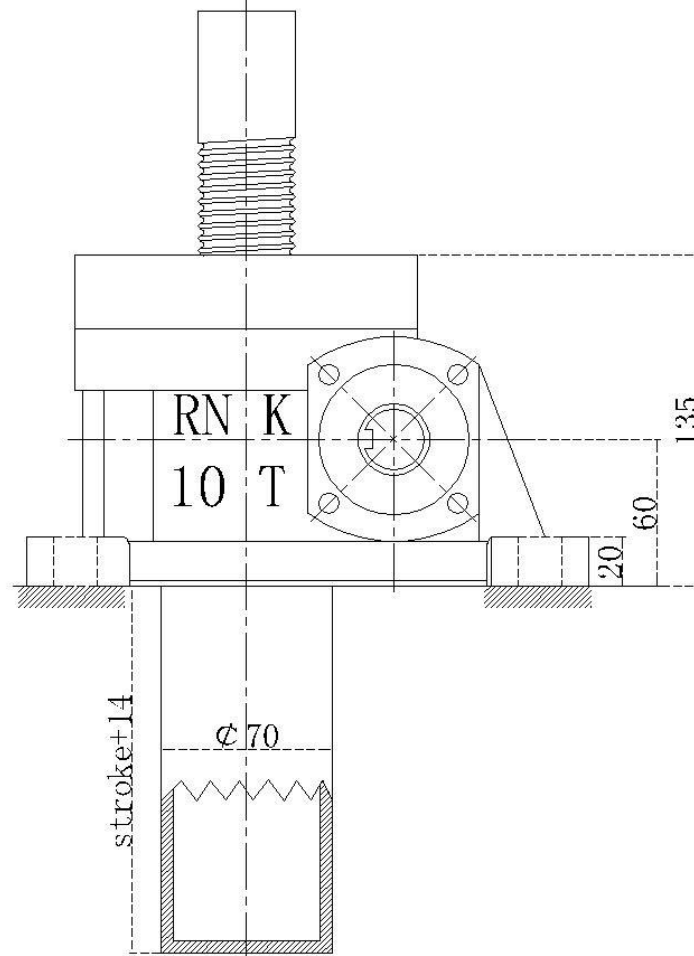
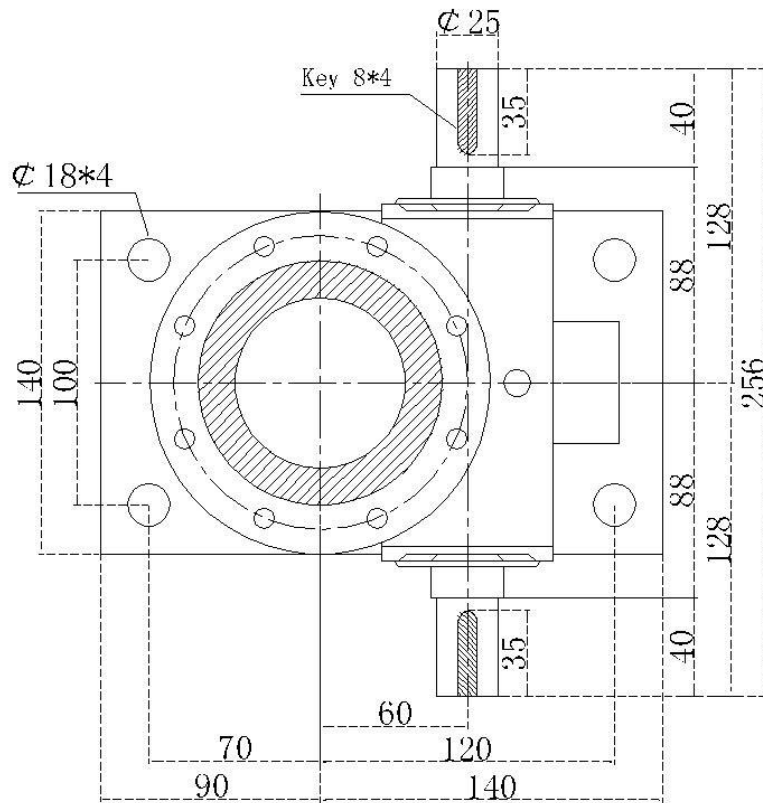
* RNK-3T



* RNK-5T



* RNK-10T



*** RNK-20T**

