

**HIWIN®**



# TM Plug & Play Version with X-series

快速安裝指南  
Quick guide

上銀科技股份有限公司  
HIWIN TECHNOLOGIES CORP.

## ● 前言

本操作手冊目的在使操作人員，除了可以更快速瞭解機台特性外，更可經由閱讀操作手冊後，可以獨立進行機台的操作，並且避免因不熟悉機台特性，而造成工作傷害，所以操作機台前，請詳細閱讀操作相關說明，以確保機台順利運行及人員操作安全。

本操作手冊適用於電動夾爪X系列結合 TM5 使用。

## ● 使用流程

TM Plug & Play Version: X-Series .....P. 2

線色腳位定義.....P. 3

XEG-16、XEG-32組裝流程圖.....P. 4

XEG-64組裝流程圖.....P. 5

## ● Introduction

After reading this manual thoroughly, operator can not only familiar with product, but also can operate product completely independently. While operating product, use the method recommended in this manual to avoid product damage or personal injury.

This manual is applied to X-Series with TM-5.

## ● Procedures

TM Plug & Play Version: X-Series .....P.2

WIRE PIN DEFINE.....P.3

XEG-16,32 ASSEMBLE FLOW DIAGRAM.....P.4

XEG-64 ASSEMBLE FLOW DIAGRAM .....P.5

TM Plug & Play Version: X-Series .....P. 2

● 型號表示法:

XEG-32-C13L1-W1-TM

● 標準配件:

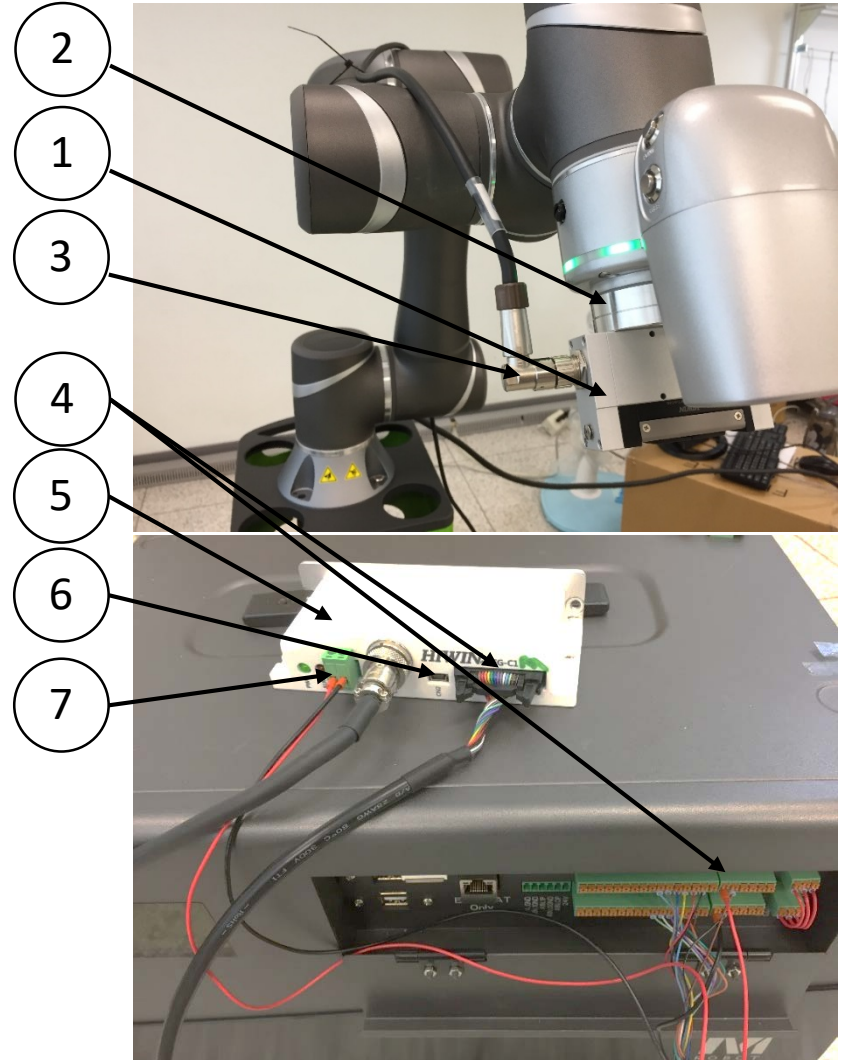
- 1. 電動夾爪 x 1 pcs
- 2. 轉接板 x 1 set (搭配TM手臂專用)
- 3. 驅控線 x 1 pcs (3m-L or 5m-L )
- 4. I/O 線 x 1 pcs (1.5m or 3m or 5m)
- 5. 電動夾爪控制器 x 1 pcs
- 6. USB 線 x 1 pcs
- 7. 電源連接器

● Model number example:

XEG-32-C13L1-W1-TM

● Standard shipping items:

- 1. Electric gripper x 1 pcs
- 2. Adapter x 1 set (special type for TM)
- 3. Actuator cable x 1 pcs (3m-L or 5m-L )
- 4. I/O cable x 1 pcs (1.5m or 3m or 5m)
- 5. Electric gripper controller x 1 pcs
- 6. USB cable x 1 pcs
- 7. Power supply plug only



線色腳位定義.....P. 2

編號	線色	功能	TM-5 電控箱
A1	Black	IN0	DO.1
A2	Red	IN1	DO.2
A3	Yellow	IN2	DO.3
A4	Blue	IN3	DO.4
A5	Grey	IN4	DO.5
A6	Light Blue	START	DO.6
A7	Brown/Black	COM+	24V
B1	Brown	BUSY	DI.1
B2	Orange	HOLD	DI.2
B3	Green	ALM-CODE1	DI.3
B4	Purple	ALM-CODE2	DI.4
B5	White	CHK-CODE1	DI.5
B6	Light Green	CHK-CODE2	DI.6
B7	White/Black	COM-	GND

WIRE PIN DEFINE.....P.2

No.	Wire color	Pin define	TM-5 Controller
A1	Black	IN0	DO.1
A2	Red	IN1	DO.2
A3	Yellow	IN2	DO.3
A4	Blue	IN3	DO.4
A5	Grey	IN4	DO.5
A6	Light Blue	START	DO.6
A7	Brown/Black	COM+	24V
B1	Brown	BUSY	DI.1
B2	Orange	HOLD	DI.2
B3	Green	ALM-CODE1	DI.3
B4	Purple	ALM-CODE2	DI.4
B5	White	CHK-CODE1	DI.5
B6	Light Green	CHK-CODE2	DI.6
B7	White/Black	COM-	GND

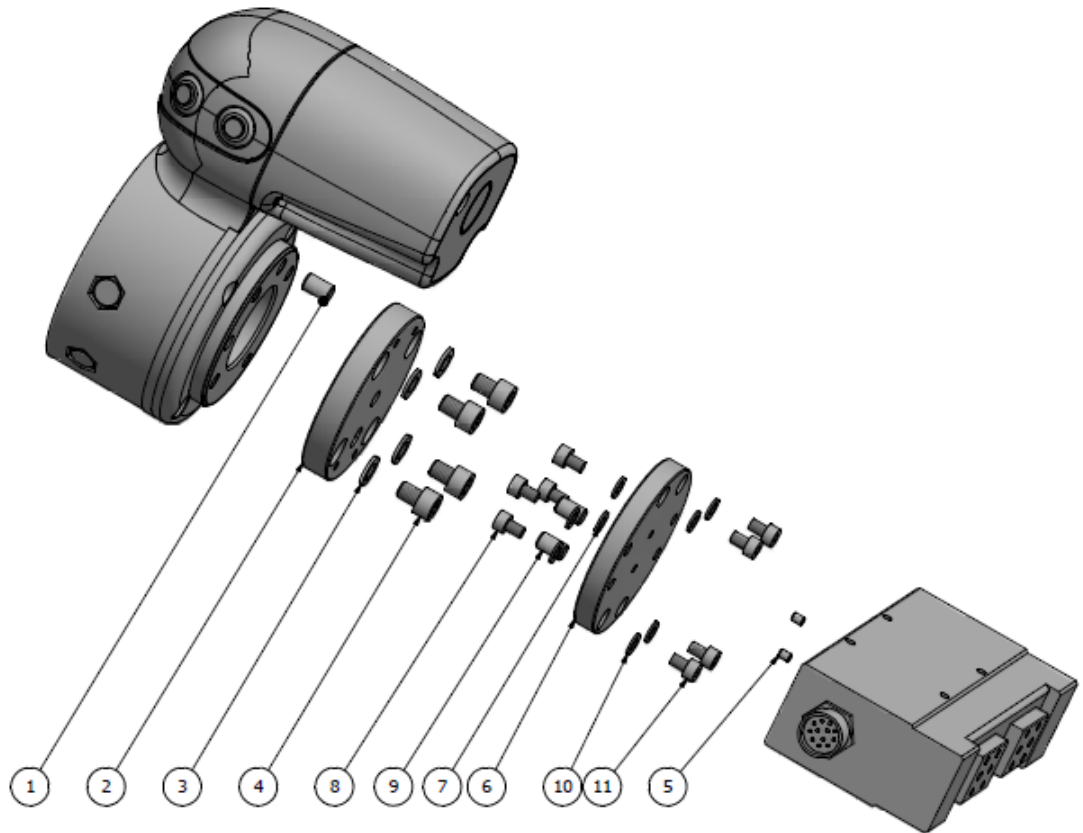
- 實際連接至TM Robot電控箱之腳位位置，請依您裝用之TM Robot硬體版本及其相對應之硬體說明書為準。
- Please follow your TM Robot's User Manual in accordance with the hardware version to have the correct connector location of each pin.

XEG-16、XEG-32組裝流程圖……………P. 4

XEG-16,32 ASSEMBLE FLOW DIAGRAM……P.4

11	Bolt	M4X0.7PX6L SUS304	4
10	Spring washer	M4 SUS304	4
9	Pin	φ6X10L	2
8	Bolt	M3X0.5PX5L SUS304	4
7	Spring washer	M3 SUS304	4
6	XEG-16 adapter	—	1
5	Pin	φ2X4.4L	2
4	Bolt	M6X1PX8L SUS304	4
3	Spring washer	M6 SUS304	4
2	TM5 adapter	—	1
1	Pin	φ6X10L	1
Items	Parts	Description	Amount
<b>XEG-16 &amp; TM5</b>			

11	Bolt	M4X0.7PX6L SUS304	4
10	Spring washer	M4 SUS304	4
9	Pin	φ6X10L	2
8	Bolt	M4X0.7PX6L SUS304	4
7	Spring washer	M4 SUS304	4
6	XEG-32 adapter	—	1
5	Pin	φ3X4L	2
4	Bolt	M6X1PX8L SUS304	4
3	Spring washer	M6 SUS304	4
2	TM5 adapter	—	1
1	Pin	φ6X10L	1
Items	Parts	Description	Amount
<b>XEG-32 &amp; TM5</b>			



XEG-64組裝流程圖.....P. 5

XEG-64 ASSEMBLE FLOW DIAGRAM.....P.5

11	Bolt	M6X1PX8L SUS304	4
10	Spring washer	M6 SUS304	4
9	Pin	φ5X6L	2
8	Bolt	M6X1PX8L SUS304	4
7	Spring washer	M6 SUS304	4
6	XEG-64 adapter	—	1
5	Pin	φ5X6L	2
4	Bolt	M6X1PX8L SUS304	4
3	Spring washer	M6 SUS304	4
2	TM5 adapter	—	1
1	Pin	φ6X10L	1
Items	Parts	Description	Amount
<b>XEG-64 &amp; TM5</b>			

